



PERLIGHT

PLM-250M-60 SERIES

Monocrystalline Silicon Solar Module

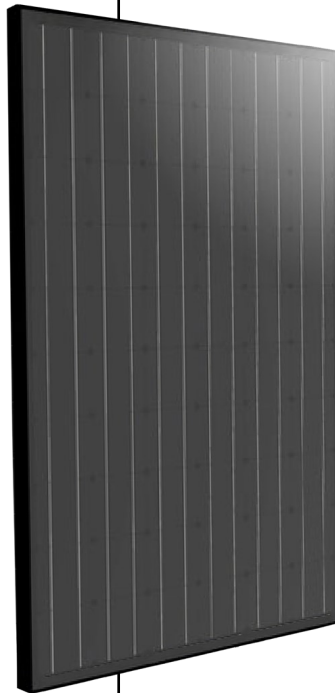
Quality, precision and performance from a leading solar panel manufacturer

Part of the Baolite Group, established in 1982. Employing in excess of 5,000 staff, Perlight Solar is a dedicated company specialising in the design and manufacture of high-efficiency solar photovoltaic panels.

Employing more than 50 professional research technicians. We manufacture our own cells and modules from wafer to packaged product. An innovative, complete and reliable product backed with 30 years experience of manufacturing and trade.

Permanent customer service centres in the UK, USA and Australia working closely with clients to meet their needs.

Perlight panels offer high efficiency and reliability. Giving consistently high performance in low-light and low temperature situations, Perlight panels are ideal for conditions in the UK.



High-efficiency photovoltaic module using silicon nitride coated monocrystalline silicon cells.

- The classic PLM-250M-60 high powered module series now extends up to 270W
- High efficiency crystalline solar cells up to 19.29%, producing maximum power even under low light conditions
- High efficiency module conversion efficiency up to 16.5%
- Highly transparent, low-iron, tempered glass and anti-reflective coating increases energy yield
- Use of Ethylene Vinyl Acetate (EVA) in production guarantees longevity of the panels
- Integrated bypass diodes to protect the solar cell circuit from hot-spots during partial shading
- Anodized aluminium frame improves load resistance capabilities for heavy wind loads
- Concealed busbars give a more uniform, sleeker finish than other modules
- Positive output tolerance of -0/+3%

Mechanical Characteristics

Cell Size (mm)	156 x 156
Module size (mm)	1650 x 992 x 40
Number of cells per module	60 (6x10)
Weight (Kg)	18.5

Product & Performance Warranty

10 year manufacturing guarantee

12 year performance warranty of 90% of original power output

25 year performance warranty of 80% of original power output



- ISO9001 and ISO14000 certified manufacturing facility
- IEC61730 safety rated for high wind pressure, hail impact, snow load and fire
- MCS Accredited
- Certified against salt mist corrosion

MANUFACTURING BASE
Perlight Solar Co.,Ltd
Muyu Administration District
Wenling
Zhejiang, 317521, China
Tel: +86 576 8647 7290
E: Jenny.uk@perlight.com

GLOBAL MARKETING CENTRE
Perlight Solar Co.,Ltd
E# 14th floor, 58 Xinjinqiao Rd
PuDong District
Shanghai, 200129, China
Tel: +86 21 6105 2372
E: enquiry@perlight.com

Solar Energy Alliance Ltd
8 & 9 Battery Green Road,
Lowestoft, Suffolk, NR32 1DE
Tel: 01502 515532
info@solarenergyalliance.com
http://www.solarenergyalliance.com

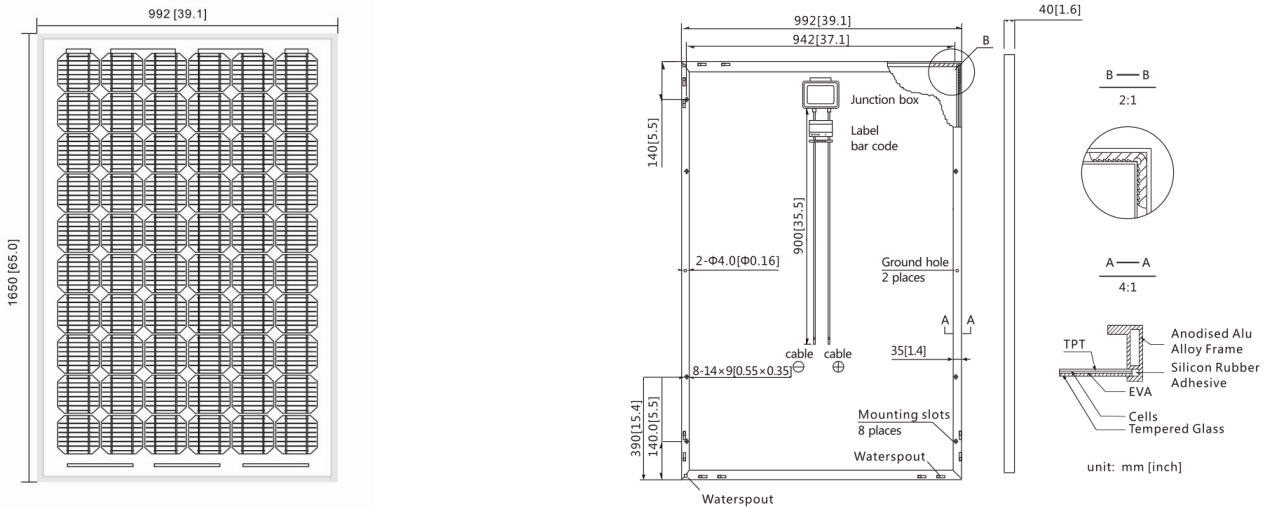


PERLIGHT

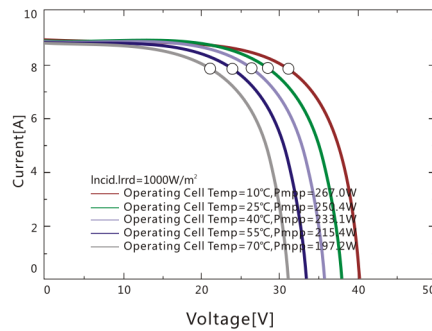
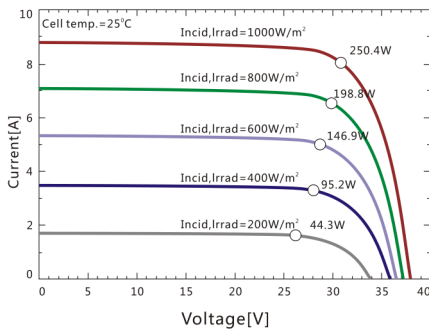
PLM-250M-60 SERIES

Monocrystalline Silicon Solar Module

Module Diagram



Electrical Curves



Standard Test Conditions: Irradiance 1000W/m², Temperature 25°C, AM=1.5

Electrical Characteristics

Model	PLM-250M-60	PLM-255M-60	PLM-260M-60	PLM-265M-60	PLM-270M-60
Pm	250W	255W	260W	265W	270W
Vmp	30.50	30.92	31.18	31.48	31.73
Imp	8.20	8.25	8.34	8.42	8.51
Voc	38.00	38.10	38.20	38.31	38.42
Isc	8.78	8.84	8.92	8.96	8.99
Max. system voltage	1000V DC	1000V DC	1000V DC	1000V DC	1000V DC

Temperature Coefficient

NOCT	45°C +/- 2°C
Isc	0.06%/°C
Voc	-0.34%/°C
Pmax	-0.45%/°C
Power Tolerance	-0/+3%
Working Temperature	-40°C to 85°C

MANUFACTURING BASE
 Perlight Solar Co., Ltd
 Muyu Administration District
 Wenling
 Zhejiang, 317521, China
 Tel: +86 576 8647 7290
 E: Jenny.uk@perlight.com

GLOBAL MARKETING CENTRE
 Perlight Solar Co., Ltd
 E# 14th floor, 58 Xinjinqiao Rd
 PuDong District
 Shanghai, 200129, China
 Tel: +86 21 6105 2372
 E: enquiry@perlight.com

EU SALES AND CUSTOMER CENTRE
 Westech Solar (UK) Ltd
 Unit 1, Bobby Fryer Close,
 Garsington Rd
 Oxford, OX4 6ZN, UK
 Tel: +44 (0)1865 682 584
 E: info@westech-solar.co.uk

